

**SAND & WATER TABLE  
902-806**

Page 1  
Rev. 08/05/2004



**MATERIAL LIST:**

903-806	STEM	(GREEN)	1
	FLOWER	(RED)	1
	FLOWER	(BLUE)	1
	LID	(GREEN)	1
435-801	BUBBLE DOMES	(CLEAR)	2
903-808	8 ¼" LEG	(WHITE)	2
903-809	9 ¾" LEG	(WHITE)	1
903-812	12" LEG	(WHITE)	4
903-821	21" LEG	(WHITE)	1
903-922	22 ¼" LEG	(WHITE)	1
116-600	½" X 2 ½" BUTTON HEAD BOLT		6
316-801	½" FLAT WASHER		6
126-701	3/8" X 1 ¼" BUTTON HEAD BOLT		8
316-601	3/8" FLAT WASHER		16
226-601	3/8" REV. LOCK NUT		8
903-804	DRAIN ASSEMBLY		2
416-350	3/16" Socket Key		1
416-400	¼" Socket Key		1
416-505	7/32" Long Arm Socket Key		1

**SAND & WATER TABLE  
902-806**

**Page 2**  
Rev. 08/05/2004

**SPECIFICATIONS:**

Panels: Made from 0.75" high-density polyethylene with UV inhibitor.  
Support Legs: Powder coated 1 7/8" O.D. pipe  
Hardware: Nickel coated  
Weight: 150 lbs.  
Required Area: 7' x 8'

**INSTALLATION INSTRUCTIONS:**

**IMPORTANT:** *Read all instructions thoroughly before beginning installation.*

1. Install one of the 12" legs to the hole at the end of the green stem with (1) 1/2" x 2 1/2" button head bolt and (1) 1/2" flat washer and tighten.
2. Next place the (3) remaining 12" legs under the remaining three holes in the stem. (Do Not Install Any Hardware In These Holes At This Time)



3. Next thread the (2) 8 1/4" legs through the plastic and into the 12" legs and tighten.



**SAND & WATER TABLE  
902-806**

**Page 3**

Rev. 08/05/2004

4. Next thread the (1) 9 ¾" leg through the plastic stem and into the last remaining 12" leg.



5. Now place the RED flower on top of the two 8 ¼" legs, line two of the holes up with the legs and place (1) ½" x 2 ½" button head bolt and (1) ½" washer in each of the holes. NOTE: Do Not Tighten The Center Bolt, This Will Have To Be Removed Later.



6. Attach the 21" leg in the third hole on the RED flower with one ½" x 2 ½" button head bolt and tighten.



**SAND & WATER TABLE  
902-806**

**Page 4**  
Rev. 08/05/2004

7. Now remove the center bolt and washer from step 5.
8. Next place the BLUE flower over the 9 ¾" leg and the open hole from step 7. Install the ½" x 2 ½" button head bolts through these two holes and tighten.
9. Attach the (1) 22 ¼" leg in the third hole of the BLUE flower and tighten.



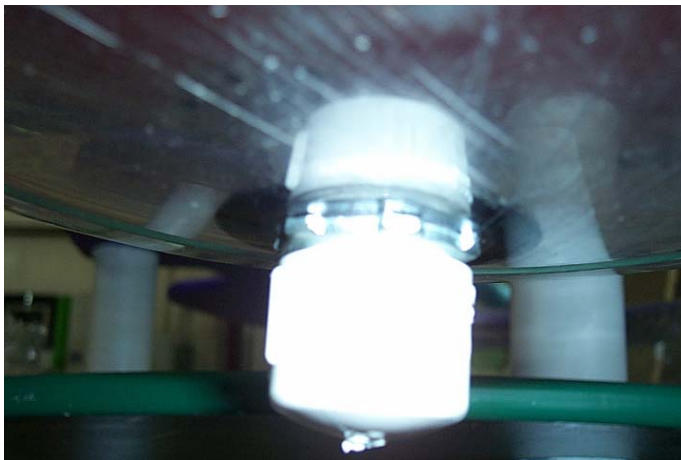
10. Make sure all bolts are tightened at this point.
11. Next place the (2) bubble domes into the center of the flowers, these holes (4 per) must be drilled by the installer. Begin this by marking one of the holes and drilling it with a 7/16" drill bit. Repeat this for both bubbles. Now fasten with (1) 3/8" x 1 ¼" button head bolt, (2) 3/8" flat washers, and (1) 3/8" reversible locknuts, and secure (DO NOT OVER TIGHTEN, THE BUBBLE COULD BREAK). Once this is done the other holes can be drilled and the remaining hardware installed.



**SAND & WATER TABLE  
902-806**

**Page 5**  
Rev. 08/05/2004

12. After the bubbles are securely fastened to the flowers the drains will need to be installed in the very bottom of the both the bubbles. First you must locate the center of the dome; this can be accomplished by pouring a small amount of water in the bubble. Once the center (lowest point) has been located drill a 1 1/8" hole in each bubble, **CAUTION! DRILL SLOWLY**. Now remove the plastic cap and metal lock nut from each drain assembly, leaving the rubber gasket on the treaded bushing. Insert the bushing and gasket through the hole down from the top. Now thread the metal lock nut on the bushing under the bubble and tighten snugly with pliers. Finally screw the plastic drain cap on the bushing; don't tighten too tight because these may be hard to remove if over tightened. **NOTE:** A small bead of silicone may be placed under the rubber gasket if a leak is detected.



**MAINTENANCE:**

Periodically check all hardware for tightness, and tighten if necessary. If any parts are found to be faulty immediately discontinue use until the part/parts have been repaired or replaced. Check for any gouges, breaks, or cracks on plastic. Check all welded areas for integrity. Check all painted surfaces for rust, chips, or scratches and touch-up with supplied paint. Keep all areas clean, clean with SOAP & WARM WATER ONLY. Replace sand and water as needed.